



TECAPRES®

Ø45mm
920daN

TITAN 45

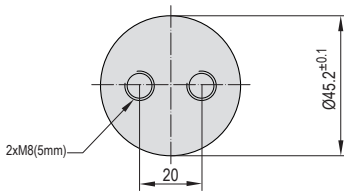
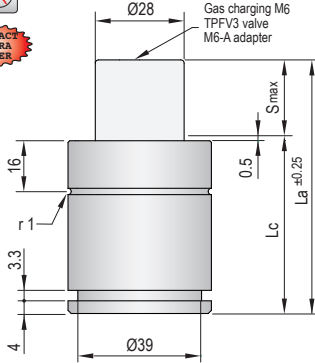
VDI SAFETY



COMPACT
EXTRA
POWER



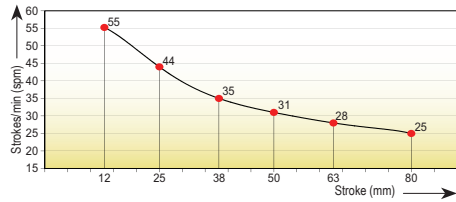
PED
2014/68/UE



- Pressure medium **Nitrogen (N₂)**
- Max. charging pressure **150 Bar**
- Min. charging pressure **35 Bar**
- Rod seal area **6,16 cm²**
- Operating temperature **0°C - 80°C**
- Force increase by temperature **0,33 %/°C**
- Max. stem speed **0,8 m/s**
- Maintenance kit **Kit T45**

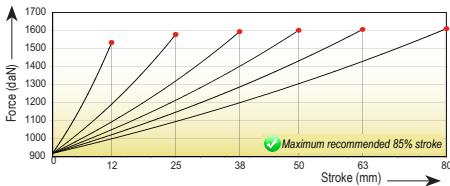


Maximum strokes / minute (at 20°C)

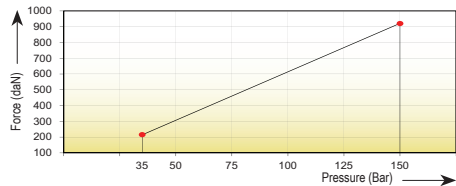


Code	Smax mm	La mm	Lc mm	Fa daN	85% F daN	100% Fc daN	P Bar	V l	Kg
TITAN 45x12	12	54	42	920 ±5% (20°C)	1400	1540	150 (20°C)	0,019	0,33
TITAN 45x25	25	80	55		1430	1585		0,037	0,43
TITAN 45x38	38	106	68		1440	1600		0,055	0,49
TITAN 45x50	50	130	80		1445	1610		0,072	0,58
TITAN 45x63	63	156	93		1450	1615		0,091	0,64
TITAN 45x80	80	190	110		1455	1615		0,115	0,84

Force/stroke ratio



Initial force/charging pressure ratio



Assembly possibilities



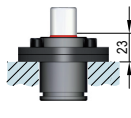
Follow guidelines
Page 287



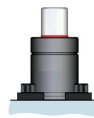
DROP-IN



SCREWS



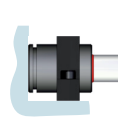
FS 45-FSC 45



FP 45-FPR 45



FB 45



FI 45-FI 45/1